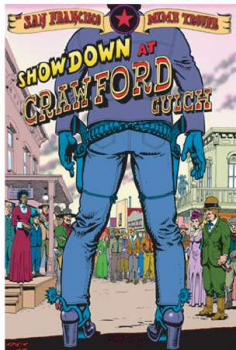


# THE SAN FRANCISCO MIME TROUPE

In its 45th Season

PRESENTS



## SHOWDOWN AT CRAWFORD GULCH

SCRIPT	Michael Gene Sullivan
LYRICS	Amos Glick, Michael Gene Sullivan, Ira Marlowe, Jason Sherbundy
MUSIC	Jason Sherbundy
DIRECTED BY	Keiko Shimosato
MUSIC DIRECTION	Jason Sherbundy
CHOREOGRAPHY	Victor Toman
COSTUME DESIGN	Callie Floor, Cassandra Carpenter
SCENIC DESIGN	Jon Wai-Keung Lowe
SCENIC ARTIST	Daniel Thobias
PROPS MASTER	Tiffany Amundson
POSTER DESIGN	Spain Rodriguez

### SCENES & SONGS

PROLOGUE	Main Street at Dawn Song: "The Ballad Of The Showdown At Crawford Gulch"
SCENE 1	Bordello and Beauty Salon
SCENE 2	Crawford Gulch Gazette Song: "Do I Really Have What It Takes?"
SCENE 3	Parson's Chapel
SCENE 4	Bordello and Barbershop Song: "The Business Of Progress"
SCENE 5	Crawford Gulch Gazette Song: "The Love We Could Have Grown"
SCENE 6	Elias' General Store
SCENE 7	Main Street Song: "When It Comes To Your Country"
SCENE 8	Main Street
SCENE 9	Main Street at Dawn

### CHARACTERS in order of appearance

CYRUS T. BOGSPAVIN	Amos Glick*
BITSY LA TOI	Lisa Hori-Garcia
PARSON JONES	Michael Carreiro*
THE RIDER OF THE SAGE	Michael Gene Sullivan*
CONSTANCE ADAMS	Velina Brown*
CLEM	Victor Toman*
MAYOR	Ed Holmes*
ELIAS MADISON	Amos Glick
NELLIE JACKSON	Lisa Hori-Garcia
MRS. GREY	Velina Brown
SHERIFF FRANK CANEM	Michael Gene Sullivan
JEEVES	Michael Carreiro

### THE BAND

KEYBOARD	Rob Broadhurst
DRUMS	Joel Fadness
GUITAR	Victor Toman

### RUNNING CREW

STAGE MANAGER	Karen Runk*
ASST. STAGE MANAGER	Jake Stoebel
AUDIO ENGINEER	Ziggy Tomcich‡
STAGE HAND	Bob Young

### PRODUCTION TEAM

PRODUCTION MANAGER	Allison Wyper
TECHNICAL DIRECTOR	Michael Carreiro
MASTER CARPENTER	Ben Flax
SET CONSTRUCTION	Sirona Beyer, Tanya Orellana, Andrew P. Saito
COSTUME CONSTRUCTION	Melissa Kallstrom, Mary Matlage, Joan Pino, David Ruble, Lourdes Ruiz
PROP CONSTRUCTION	Maria Sanchez
ASSISTANT TO THE WRITER	Bob Young

### THE MIME TROUPE COLLECTIVE

Bruce Barthol, Velina Brown, Ellen Callas, Michael Carreiro, Dan Chumley, Amos Glick, Ed Holmes, Keiko Shimosato, Michael Sullivan, Victor Toman

### THE MIME TROUPE STAFF

GENERAL MANAGER	Peggy Rose
COLLECTIVE MEMBER ON STAFF	Ellen Callas
PUBLICIST	David Perry & Associates
DEVELOPMENT DIRECTOR	Jerome Moskowitz
COMMUNICATIONS/DATABASE MANAGER	Elisabeth Millican
PRODUCTION/ADMIN. INTERN	Alex Cochran
WORK EXCHANGE COORDINATOR/ADMIN. INTERN	Jean O'Hara

### SPECIAL THANKS

A.C.T., Adam Moffett, Alix Schwartz and Sean Baker, Andrea Snow, Bi-Rite Market, Blowfish Sushi, Bruce Barthol, Cal-Mart Supermarket, Cheeseboard Pizza Collective, City of Berkeley, CMC & Design, Conrad Cimarra, Craig Knudsen, David Gallagher, David Tier, Dolores Park Café, Double Rainbow Gourmet Ice Creams, Emnio Marricone, Helen Slomowitz, Incante Restaurant, Jamba Juice, Joan Holden, Joel Morgante, Joshua Israel, Julie Bernstein, Kevin Handley, La Mediterranee, Last Paint, Lyia Baylin, Magnolia Pub & Brewery, Memphis Minnie's Bar-B-Que Joint, Monterey Market, Patti Silver, Rainbow Grocery Cooperative, Sparky's 24-hour Diner, Veritable Vegetable, Weapons of Choice, Yes Duffy, Holzmuller, Williams-Sonoma, and all the volunteers helping the Troupe out with community housing, set-up and strike.

### SPECIAL THANKS TO FOUNDATIONS & AGENCIES

Bernard Osher Foundation, California Arts Council, Leo J. & Celia Carlin Fund, City of San Francisco Grants for the Arts, James Irvine Foundation, LEF Foundation, National Endowment for the Arts, San Francisco Foundation, W. A. Gerbode Foundation, William & Flora Hewlett Foundation, and the Zellerbach Family Fund.

### MIME TROUPE 2004 SCHEDULE

For full details visit [www.sfmt.org](http://www.sfmt.org) or call 415-285-1717

Live Music 1:30PM, Show 2PM--EXCEPT AS NOTED

### JULY

21, 22 ARENA THEATER Pt. Arena, Music 7:30PM, tickets 707-882-3272  
 23 MATEEL COM. CTR. Redway, Music 7:30PM, tickets 707-923-3368  
 25 VAN DUZER THEATER/MAD RIVER FESTIVAL Arcata,  
 Music 6:30PM, Show 7PM, ticket info: [www.dellarte.com](http://www.dellarte.com)  
 28, 29 LAKESIDE PARK Oakland, Music 6:30PM, Show 7PM  
 31 MOSSWOOD PARK Oakland

### AUGUST

1 YERBA BUENA GARDENS San Francisco  
 4 VETERANS PARK Napa, Music 6:30PM, Show 7PM  
 5 ANALY HIGH SCHOOL/TOWN HALL COALITION Sebastopol  
 Music 7PM, Show 7:30PM, tickets 707-847-9110  
 7, 8 SAN LORENZO PARK Santa Cruz, Music 2:30PM, Show 3PM  
 11 MONTCLAIR BALL FIELD Montclair, Music 6:30PM, Show 7PM  
 12 CIVIC PARK Walnut Creek, Music 6:30PM, Show 7PM  
 14, 15 LIVE OAK PARK Berkeley  
 18 BOLINAS COM. CTR. Bolinas, Music 7PM, tickets 415-868-2128  
 19 TODD GROVE PARK Ukiah, Music 6:30PM, Show 7PM  
 21 PEACOCK MEADOW - GOLDEN GATE PARK San Francisco  
 22 WASHINGTON SQUARE PARK San Francisco  
 25 MILL VALLEY COM. CTR. Mill Valley, Music 6:30, Show 7PM  
 28, 29 WILLARD PARK/HO CHI MINH Berkeley

### SEPTEMBER

1 MENLO COLLEGE QUAD Atherton, Music 6:30PM, Show 7PM  
 2 SEBASTIANI THEATER Sonoma, Music 7PM, tickets 707-996-9756  
 4, 5, 6 DOLORES PARK San Francisco  
 11 CENTRAL PARK Davis  
 12 SOUTHSIDE PARK Sacramento  
 15, 16 CTR. FOR THE ARTS Grass Valley, 7PM, tickets 530-274-8384  
 18, 19 ROEDING PARK Fresno, Music 3:30PM, Show 4PM  
 22 APPLGATE PARK Merced, Music 6:30PM, Show 7PM  
 23 MANCINI BOWL Modesto, Music 6:30PM, Show 7PM  
 24 OAK PARK Stockton, Music 6PM, Show 6:30PM  
 26 WALNUT PARK/PROGRESSIVES FAIR Petaluma, Music 4PM, Show 4:30PM



[www.sfmt.org](http://www.sfmt.org)

855 Treat Ave. SF, CA 94110 | 415-285-1717

Mime is the exaggeration of daily life in story and song.

\*Members of Actors' Equity Association, the Union of Professional Actors and Stage Managers in the United States.

‡Audio Engineer in this production is a member of the International Alliance of Theatrical Stage Employees.